The image shows the exterior of Skyline Elementary School. The building is a modern, two-story structure with a mix of dark grey and light tan brickwork. Large windows are visible on the right side. In the foreground, there is a paved courtyard area with several rows of concrete planters containing small trees and shrubs. A large tree is on the left side. The sky is blue with scattered white clouds.

**SKYLINE ELEMENTARY SCHOOL**  
Solana Beach School District  
Phase 2 & 3



# INTRODUCTION



# PLANTING DESIGN - Site Plan



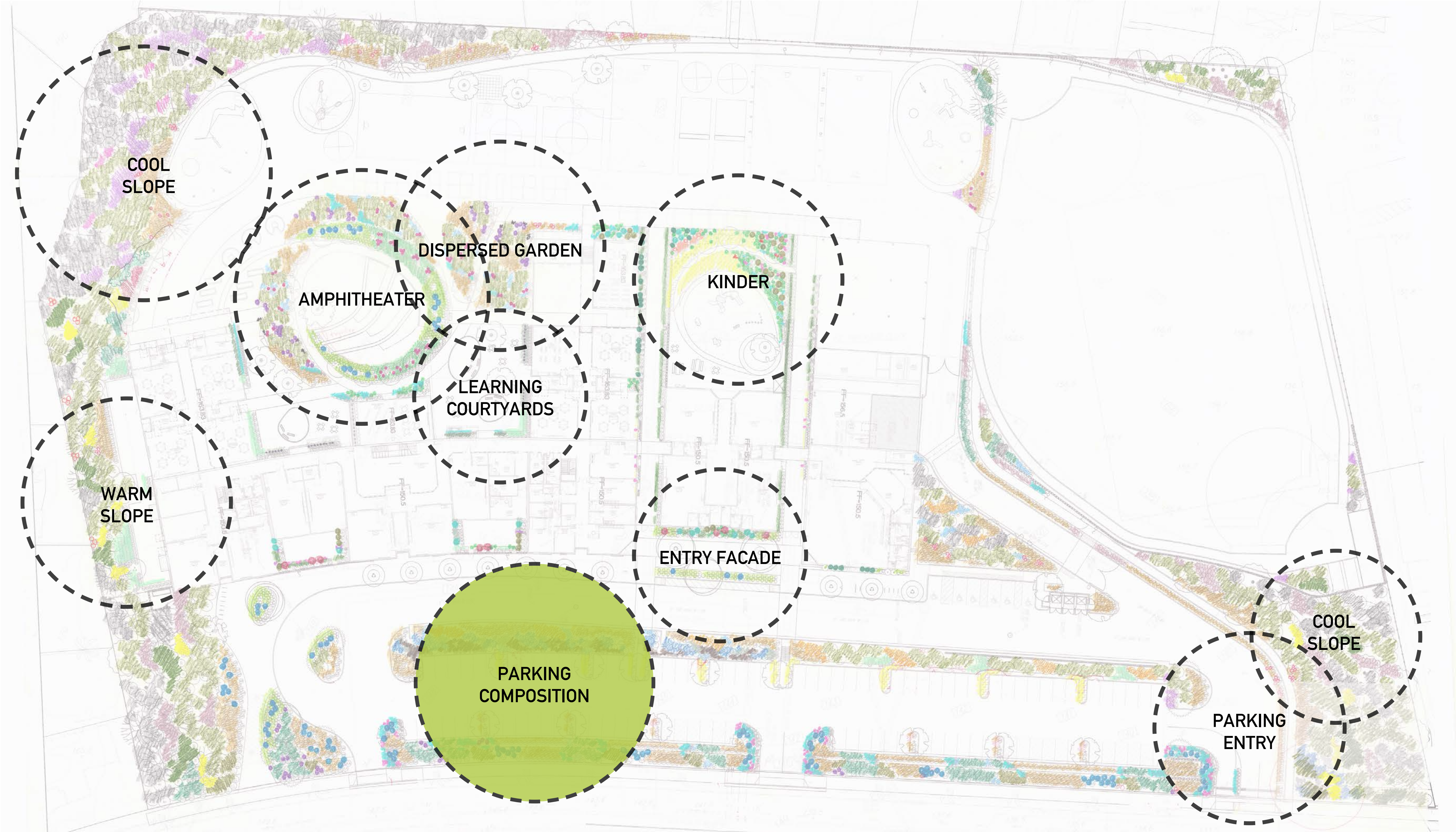


PLANTING DESIGN - Planting Character



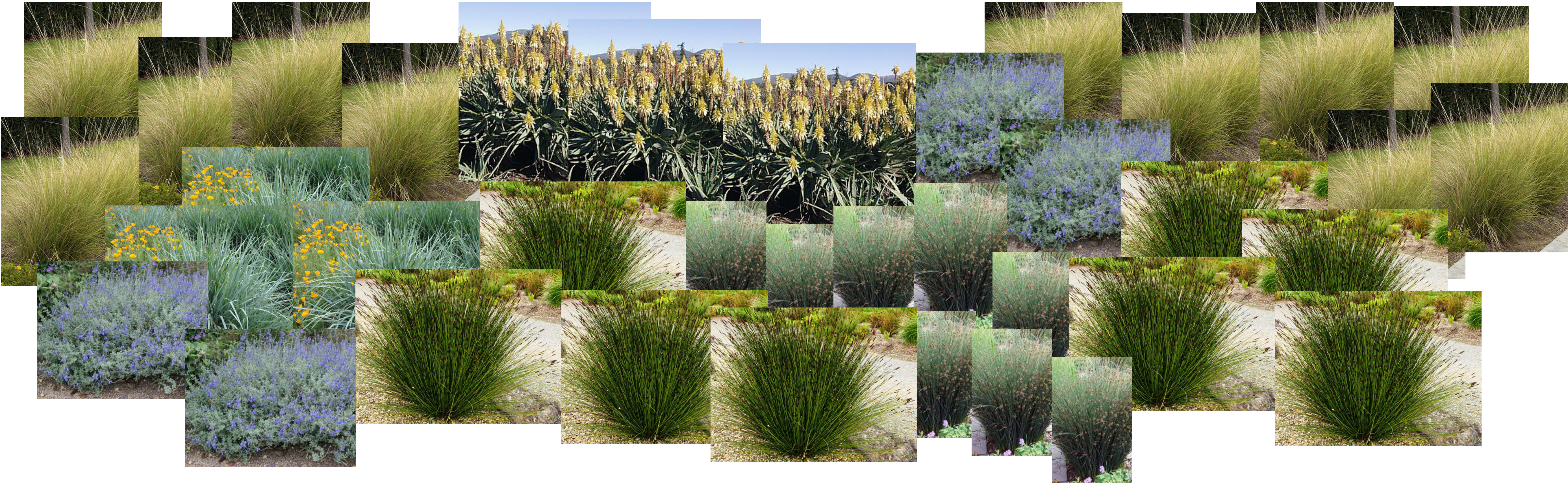


# PLANTING DESIGN - Planting Zones





# PLANTING DESIGN - Plant Palette



- SPECIES:**  
 MUHLENBERGIA RIGENS  
 DIETES GRANDIFLORA 'VARIEGATA'  
 CHONDRPETALUM TECTORUM  
 JUNCUS PATENS  
 SALVIA CHAMAEDRYOIDES  
 ALOE 'YELLOW TORCH'  
 AGAVE ATTENUATA 'NOVA'  
 AEONIUM 'JOLLY GREEN'  
 ROSMARINUS OFFICINALIS  
 LEPTOSPERMUM LAEVIGATUM 'REEVESII'





# EXISTING CONDITION - Plan View



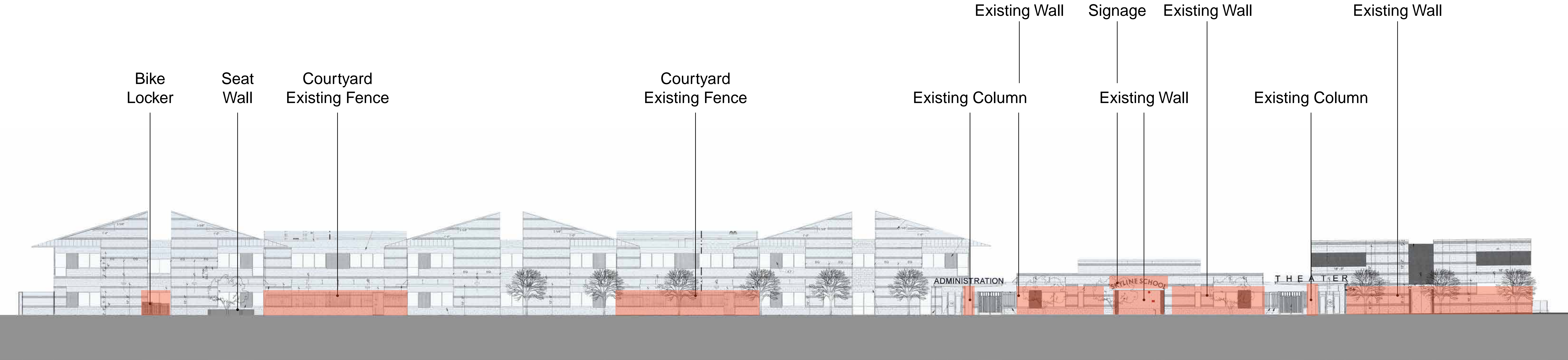


# EXISTING CONDITIONS - Site Photos



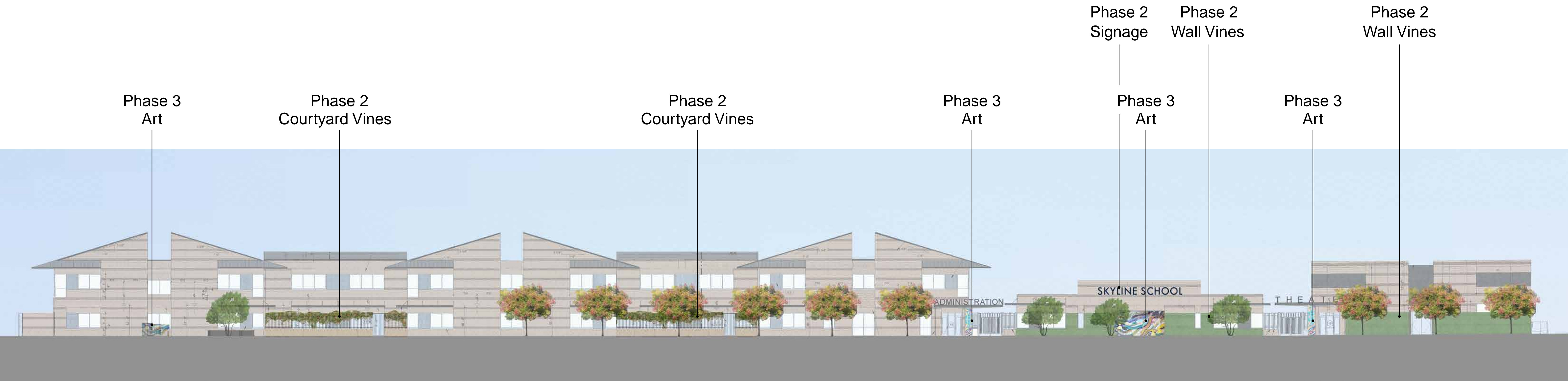


# EXISTING CONDITIONS AND OPPORTUNITIES





# OPPORTUNITIES - Overall South Elevation





# PHASE 2: Courtyard Vines





## PHASE 2: Courtyard Vines



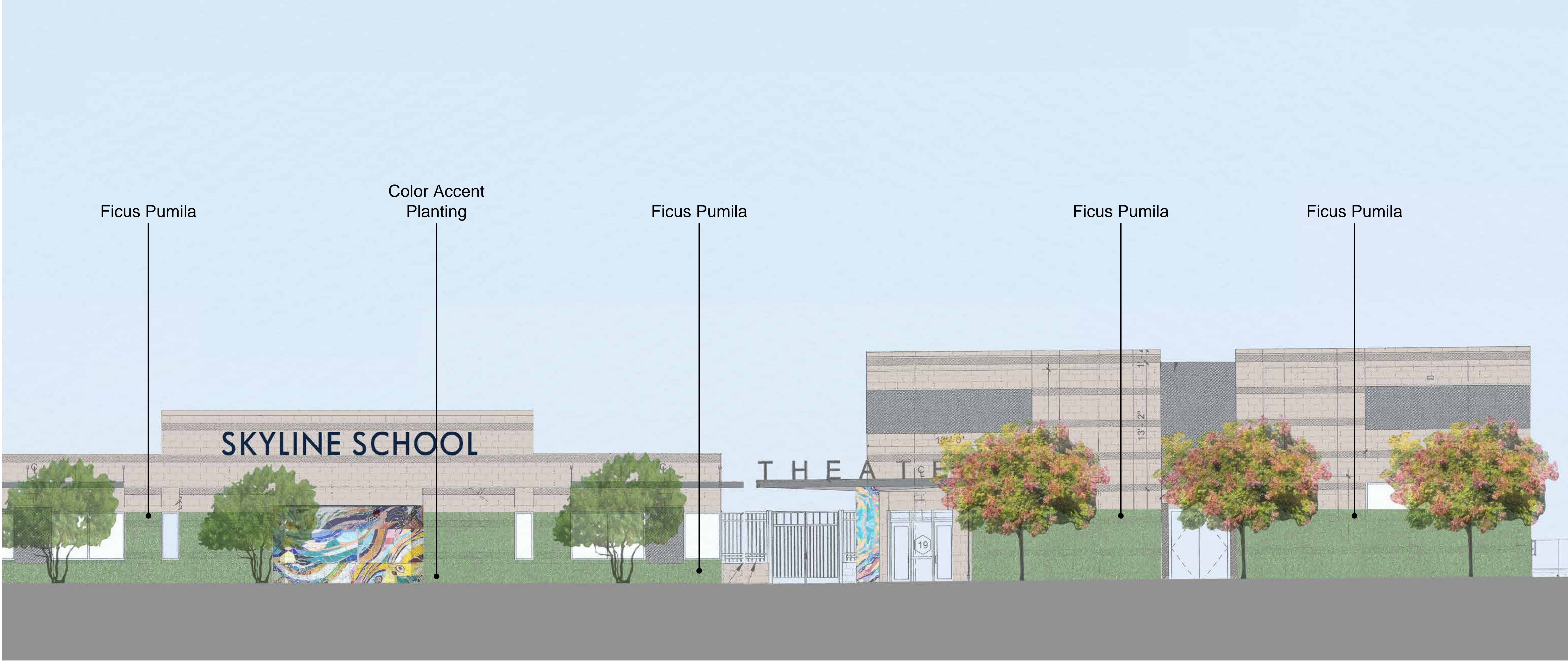
*Distictis buccinatoria*, Red Trumpet Vine



*Solandra maxima*, Cup of Gold Vine

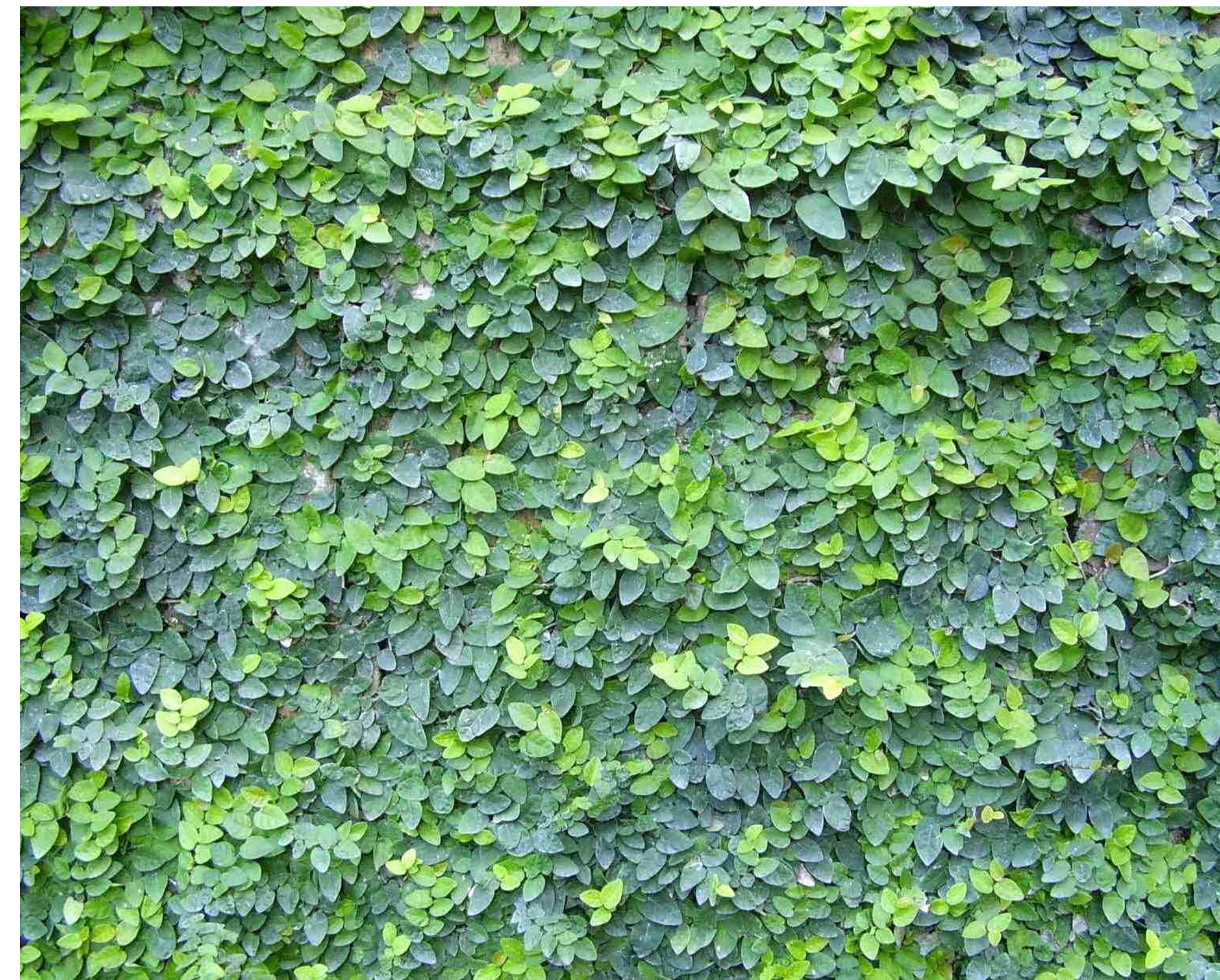


# PHASE 2: Entry Facade Planting





## PHASE 2: Wall Vines



*Ficus pumila*, Creeping Fig



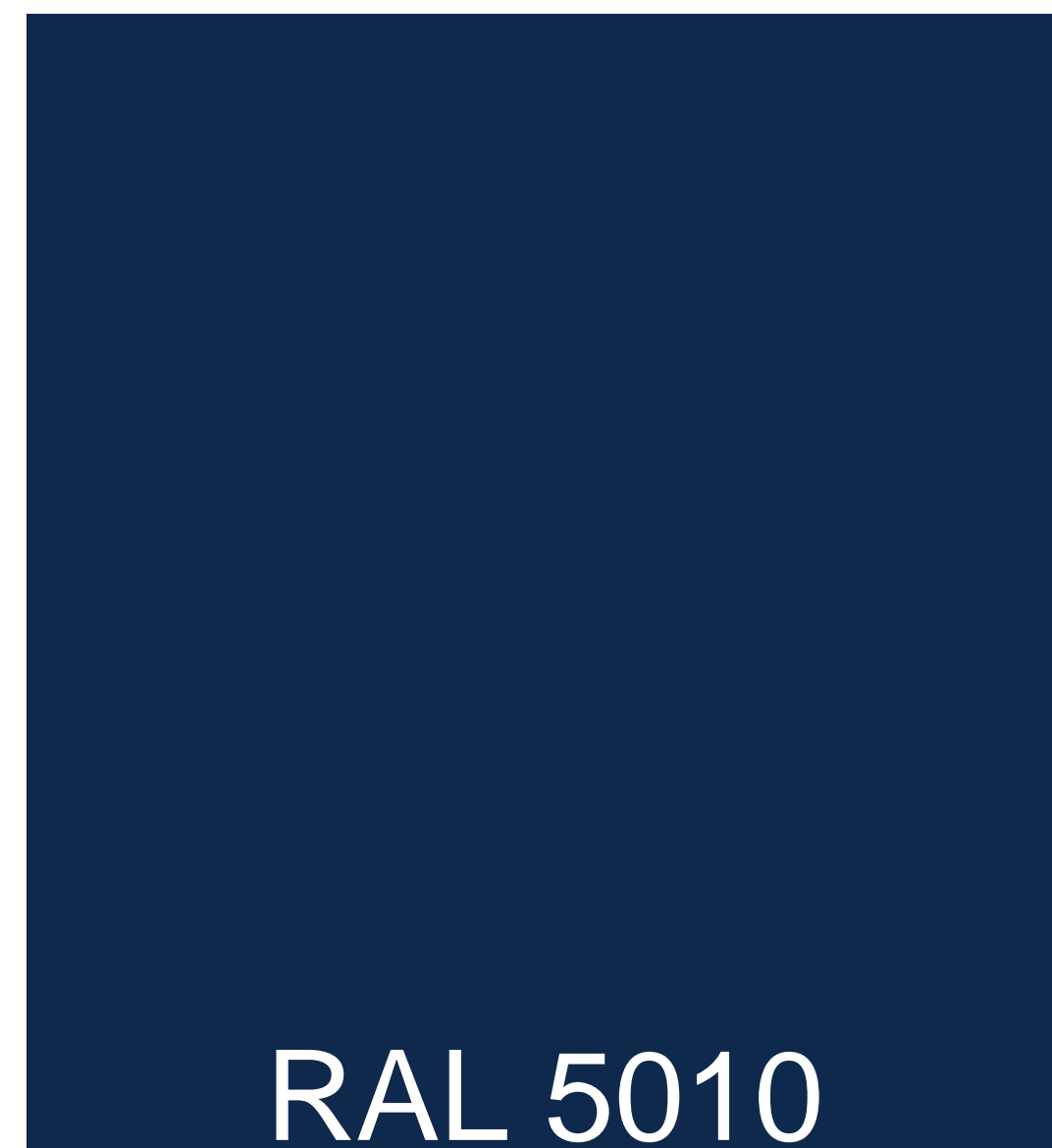
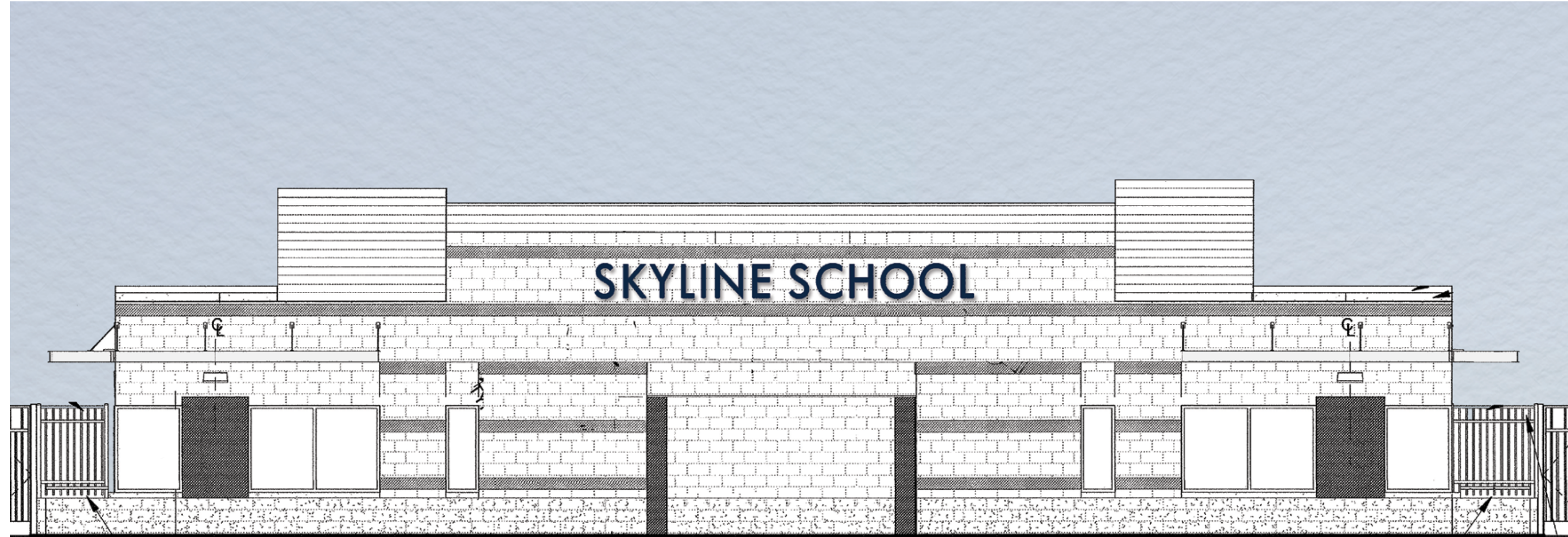
# PHASE 2: Color Accent Planting



Aeonium 'Sunburst'  
Aloe petricola  
Leucadendron 'Safari Goldstrike'  
Leucospermum 'Yellow Bird'  
Salvia chamaedryoides

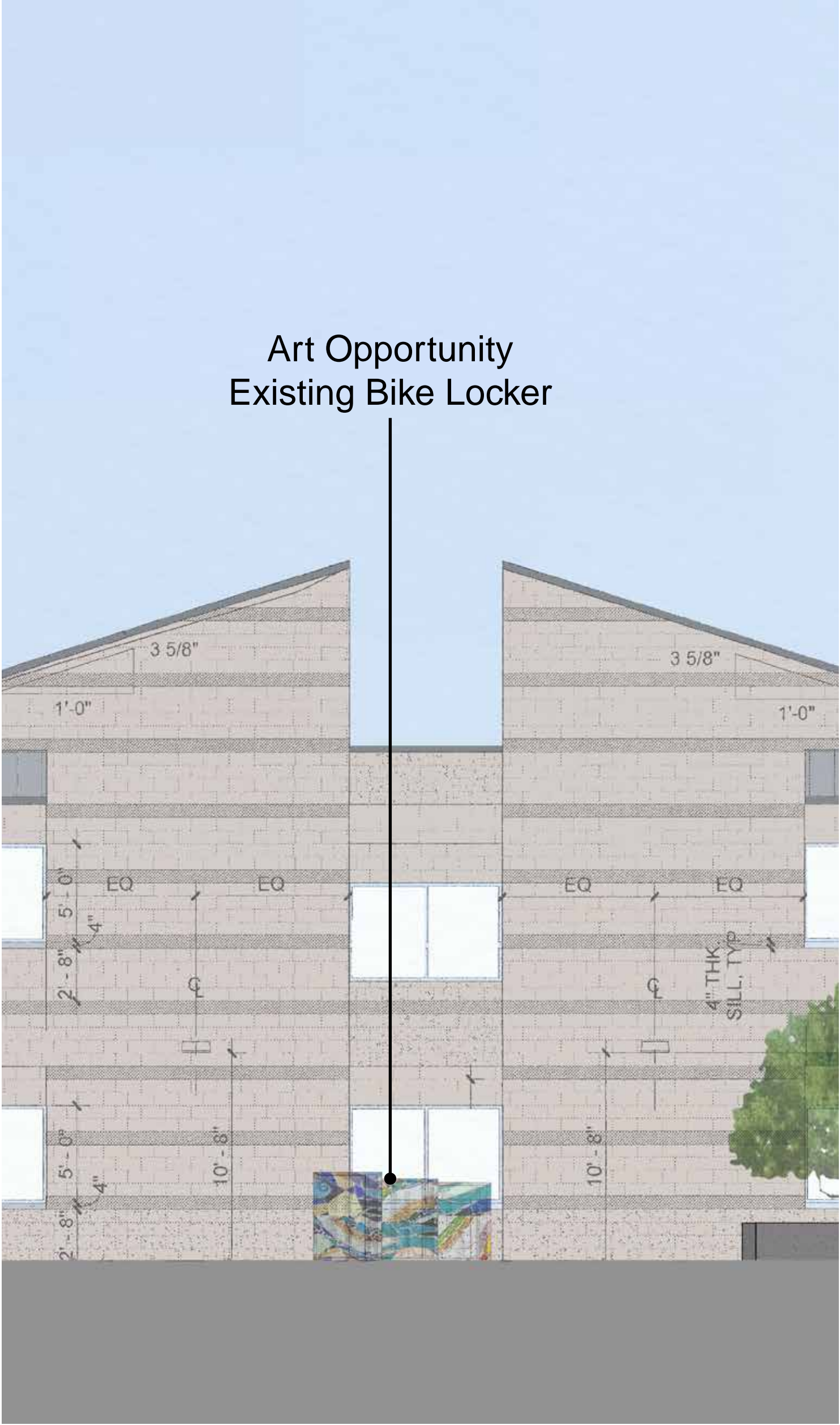


# PHASE 2: Signage





# PHASE 3: Art Opportunities and Fence



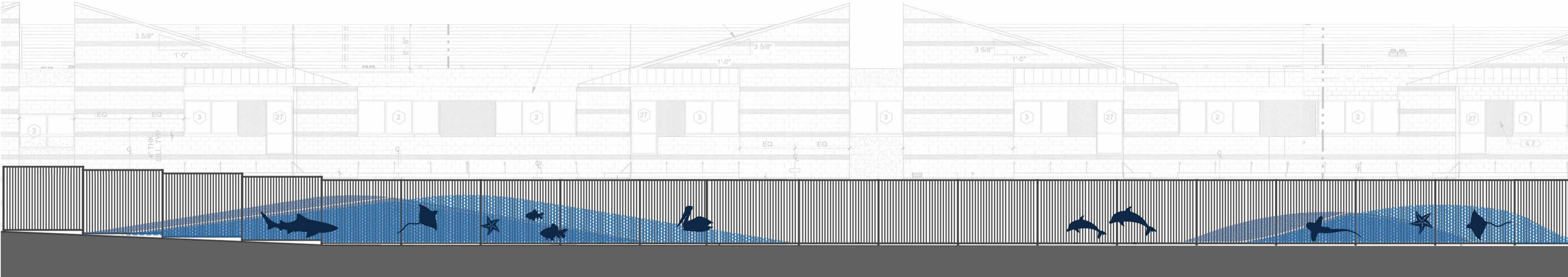


PHASE 3: Art Opportunities





PHASE 3: Fence





## PHASE 2 COST SUMMARY

<i>Description</i>	<i>Location</i>	<i>Quantity/ Description</i>	<i>Estimated cost</i>
<b>PLANTING</b>			
Wall vines	MPR and Kindergarten facades	(22) 5 gallon Ficus pumila	792.00
Courtyard vines	Learning Courtyards	(6) 15 gallon Distictus buccinatoria	816.00
Additional color accent allowance	MPR and Kindergarten facades OR parking OR streetfront	(50) 5 gallon various species	1,800.00
		<b>SUBTOTAL</b>	<b>3,408.00</b>
<b>SIGNAGE (3 options)</b>			
Option 1 Pin-mount only	Kindergarten facade	Painted aluminum, set 2" off building face	8,160.00
Option 2 Pin-mount with lighting	Kindergarten facade	Painted aluminum, set 2" off building face, LED strip lighting in back of channel letters	14,460.00
Option 3 Pin-mount with lighting and silhouette letters	Kindergarten facade	Painted aluminum, set 2" off building face, LED strip lighting in back of channel letters, painted silhouette letters mounted to building	22,150.00
Wall Repair	Kindergarten facade	Patch holes in CMU and/or selectively replace block face as required at old signage location	TBD



THANK YOU!